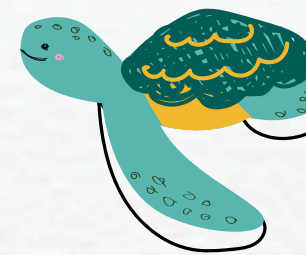




# Kids Menu



## STARTERS

GARLIC BREAD (v) 1.99

STICKY CHICKEN WINGS 2.75  
With a BBQ dip (†)

CORN RIBS 2.75

With melted butter (v)  
(ve option available)

## MAINS

CHICKEN NUGGETS 5.25  
With chips and beans

MARGHERITA PIZZA (v) 5.99

FISH FINGERS 5.75  
With chips and garden peas (†)

BANGERS & MASH 4.75  
With garden peas and gravy

BEEF BURGER 5.75  
With chips and beans

## DESSERTS

SALTED CARAMEL CHOCOLATE BROWNIE 2.99  
With salted caramel sauce and vanilla ice cream (v)

ICE CREAM FUN 2.99  
Vanilla ice cream, with hundreds & thousands, chocolate beans and marshmallows, with your choice of chocolate, strawberry or raspberry sauce

COOKIE DOUGH 2.99  
With vanilla ice cream, chocolate sauce and chocolate sprinkles (v)



## SUNDAY ROAST *\*Available Sundays only*

With roast potatoes, Yorkshire pudding, seasonal vegetables and gravy

ROAST BEEF 7.75

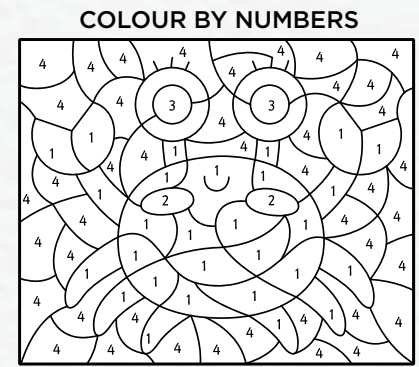
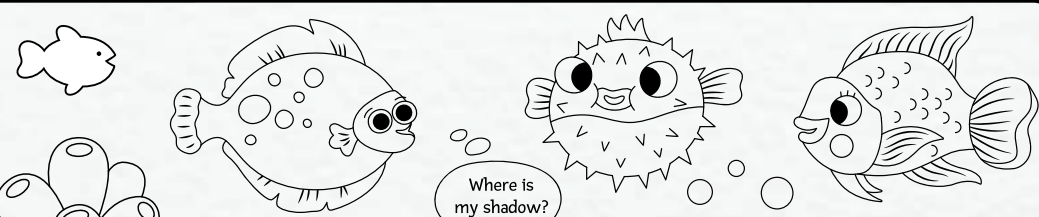
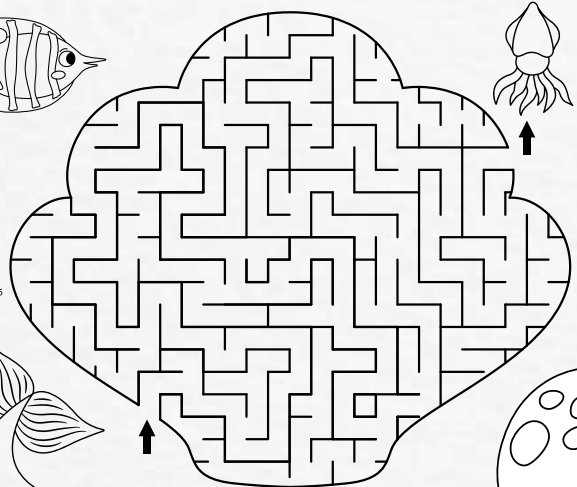
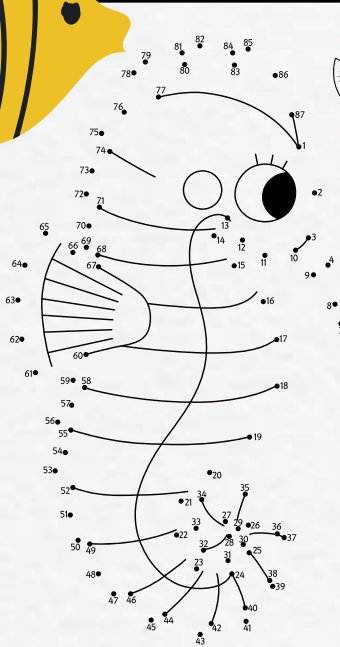
ROAST CHICKEN 7.25

### DIETARY REQUIREMENTS

We don't claim to be a 'free from' restaurant but tell us your specific allergen requirements and we will check everything and take extra care with your meal. Scan the QR code for our allergens guide and calorie information or visit: <https://links.digitalpubs.co.uk/680518>. A printed copy of the allergy information is also available from a team member. All weights stated are approximate uncooked weights. (v) vegetarian (ve) vegan (†) may contain bones or shells.







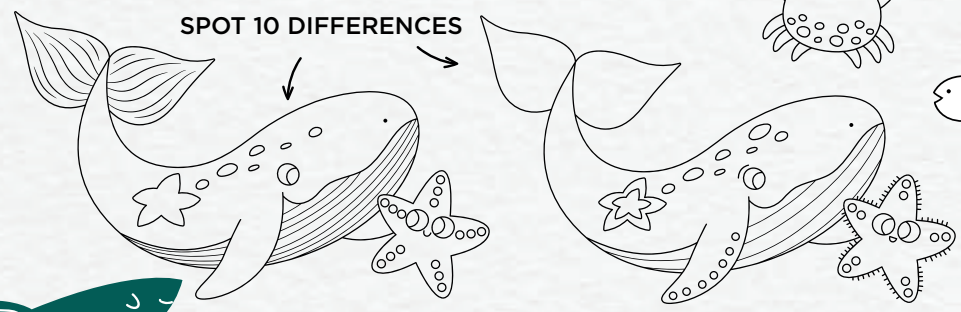
- 1 red
- 2 pink
- 3 black
- 4 blue

CAN YOU FIND THE HIDDEN WORDS?

- starfish
- seal
- octopus
- turtle
- shark
- crab
- dolphin
- whale
- seahorse
- jellyfish

W E E O N V J Q F V O H A D H  
C S R Z S U P O T C O F B W X  
O R L D R S E A H O R S E N U  
W N A D O L P H I N E M E V V  
W K J B M U C C W T U R T L E  
J R Y P M B D A O H A N L L O  
T A W H A L E J C S E A L T U  
B H Z S T A R F I S H Y W J D  
G S L N H S I F Y L L E J L D  
H Y O Z C V N O W O K W Z V H

SPOT 10 DIFFERENCES



FIND TWO OF THE SAME JELLYFISH

